



DEEP X PLEX

HAIR SYSTEM

EN/01/2017

System for the protection and reconstruction of hair during and after hairdressing treatments

DEEP_PLEX HAIR SYSTEM is a reliable, innovative **DEEPBOND** technology. It has been developed at the **STAPIZ PROFESSIONAL HAIR COSMETICS**, laboratory and confirmed by numerous tests. The technology protects and rebuilds the binding power of hair fibers through the use of multifunctional ingredients of natural origin with a unique chemical structure.



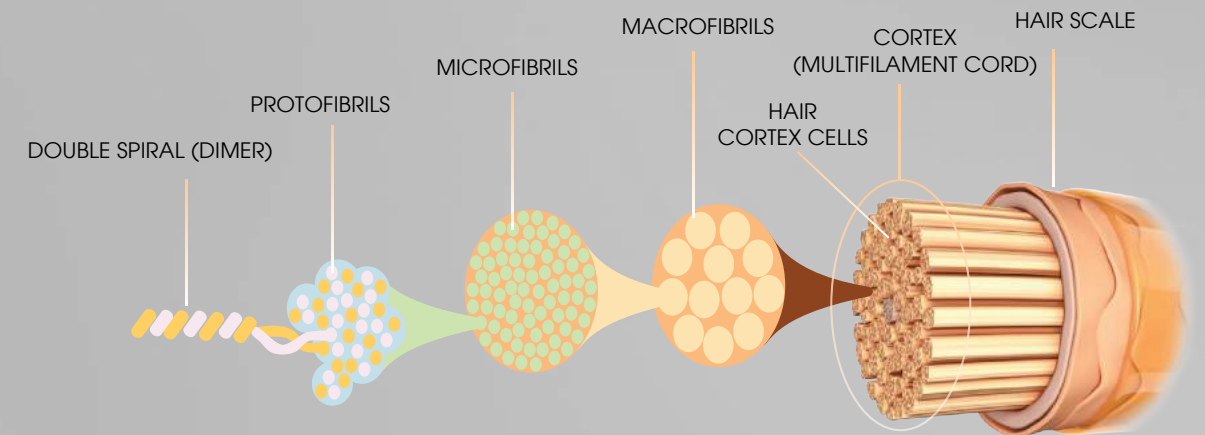
DEEP_PLEX: THE POWER AND STRENGTH OF BONDS



DEEP_PLEX HAIR SYSTEM

a professional line of hair cosmetics that acts comprehensively

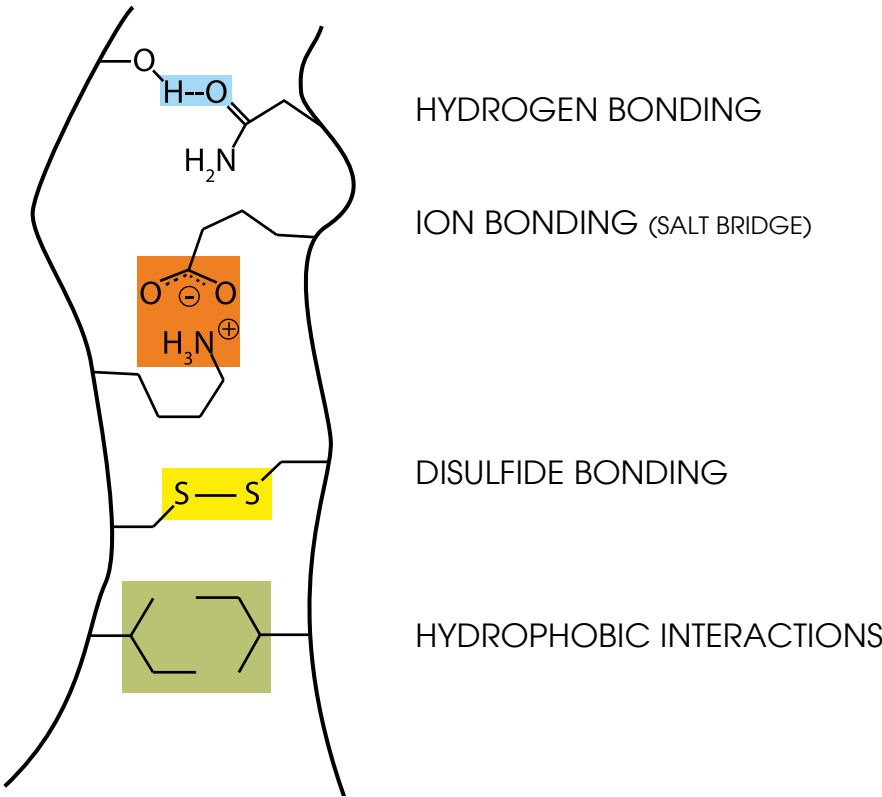
- A copolymer fraction of a lower molecular weight penetrates the hair cortex, thereby strengthening binding in the hair fibers.
- A copolymer of a higher molecular weight creates a protective layer on the hair surface, protecting the hair fibers from the negative effects of hairdressing treatments.
- Significantly reduces the risk of breakage of hair.
- Cements the effect of hair reconstruction after hairdressing treatments.



CONSTRUCTION AND STRUCTURE OF HAIR FIBERS

DEEP_PLEX HAIR SYSTEM allows for effective protection and restoration of the bonding forces in hair fibers that are damaged and broken during chemical treatments such as dyeing, toning, lightening, perming, and chemical straightening.

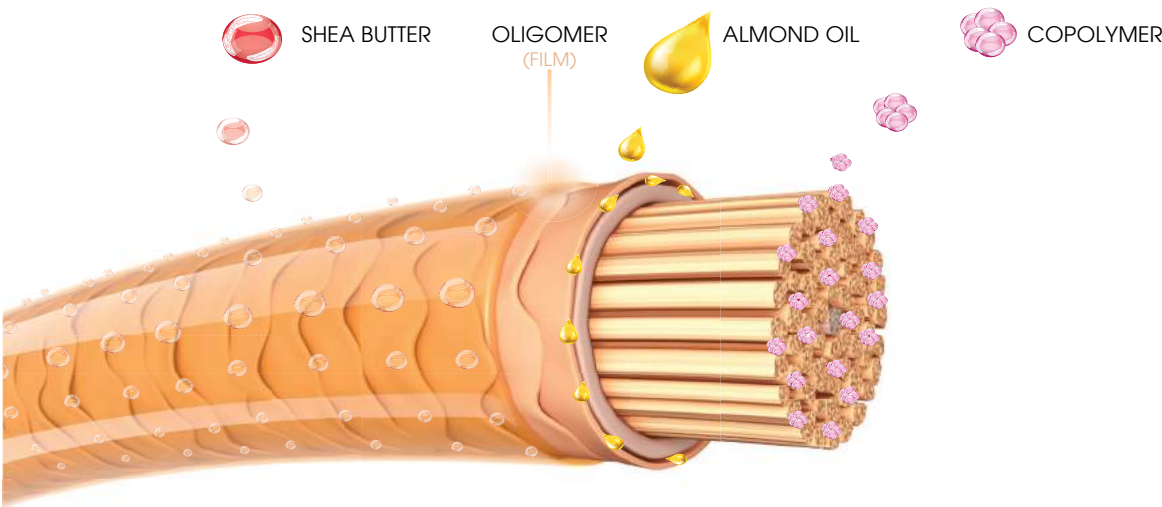
DEEP_PLEX gives the hair extreme protection, strengthening, and an intense glow without significant impact on the effectiveness and results of chemical processes; this allows you to maintain the same application patterns and exposure time during each hairdressing procedure.



TYPES OF BONDS FORMING KERATIN STRUCTURE IN HAIR FIBERS

During a treatment with **DEEP_PLEX HAIR SYSTEM** several key components can be distinguished:

- A unique protein copolymer obtained from a combination of a copolymer and amino acids from hydrolyzed plant proteins, which has a multifunctional effect:
 - Penetrates deep into the hair, giving it strength from the inside which means that it prevents the interaction of active ingredients involved in chemical reactions with the amino acids of the hair, protecting them from damage.
 - Develops a protective film that strengthens the existing hair disulfide bridges and bindings responsible for the structure and strength of the hair, minimizing the risk of breaking.
- Oligomer obtained from the combination of organic acid (sebacic acid) and hydrogenated castor oil. Characterized by a high affinity to the hair surface, it helps to seal the scales by creating a smooth, shiny film.
- Shea butter effectively protects the hair from negative externalities (wind, frost, UV rays, saltwater) and the harmful effects of hairdressing treatments. It moisturizes your hair, smoothing it out and eliminating porosity, leaving the hair rich in saturated and unsaturated fatty acids, provitamin A, vitamin E, natural UV filter, and natural allantoin.
- Sweet almond oil, a natural emollient, softens, smooths, and moisturizes the hair - a light oil that is easily absorbed and does not form a greasy film.



DEEP PLEX: THE CUMULATIVE FORCE OF INNOVATIVE SUBSTANCES



DEEP X PLEX
HAIR SYSTEM



DEEP X PLEX
HAIR SYSTEM

DEEP_PLEX N°1 BOND STIMULATOR

6 ML, 150 ML

Compatible with every coloring, lightening, perming or chemical hair straightening product.

ACTION SYSTEM:

A unique protein copolymer with a multifunctional effect:

■ Penetrating deep into the hair, giving it strength from within, it prevents the interaction of active ingredients participating in chemical reactions with hair amino acids, protecting the hair from damage.

■ A protective film is created which strengthens the existing hair fiber bindings and disulfide bridges, minimizing the risk of breakage and damage.

DEEP_PLEX N° 1 BOND STIMULATOR is added to the coloring, brightening, and straightening mixture and as a result it does not allow the aggressive ingredients to damage the structure of the hair.



DEEP_PLEX N° 2 BOND ENHANCER

25 ML, 290 ML

Preserves, strengthens, and cements the effect of rebuilding and protecting the hair. It closes the scales of the hair and nourishes them, giving them strength, extreme smoothness and radiance.

ACTION SYSTEM:

The multifunctional ingredients fix the effect of hair restoration inside, cementing them in. In addition, the nutritional properties of Shea Butter and sweet almond oil moisturize and give the hair softness.

DEEP_PLEX N° 2 BOND ENHANCER is used after the application of **DEEP_PLEX N° 1 BOND STIMULATOR**. This is the stage closing the hair shells and cementing the effect of restoring the bonds, giving them flexibility, endurance, a unique glow, and extreme smoothing.



DEEP_PLEX N° 3 BOND STABILIZER

10 ML, 290 ML

Helps to maintain the bonding power in hair fibers between chemical treatments carried out in the hairdressing salon. The stabilizer protects against the harmful effects of external factors by shielding the scales of the hair.

ACTION SYSTEM:

The **DEEP_PLEX N° 3 BOND STABILIZER** provides a supportive dose of active substances that support the protective structure obtained in the salon, helping to maintain the binding power in the hair fibers that can be weakened by negative externalities (UV radiation, frost, wind, salt water), physical factors (high temperature of dryer, straightener or curling irons), mechanical damage (improper use of combs, brushes and hair ornaments, jerking and pulling on wet, tangled hair).

This preparation is intended for home use twice a week after a hairdressing salon treatment.



DEEP_PLEX N° 4 STABILIZING SHAMPOO

15 ML, 290 ML

By using mild washing agents, it gently cleans and nourishes the hair and head skin. It does not contain SLS and SLES. Designed for use in the hairdressing salon after a chemical treatment with DEEP_PLEX as well as for daily home care.

The **STABILIZING SHAMPOO** formula is based on delicate washing substances that have been selected to thoroughly clean the hair and head skin without compromising the results. Additionally, the active ingredients stabilize the effects of the treatment producing a rich, creamy foam with a neutral pH.



EFFECTIVENESS TEST

Multiple tests have proven that **DEEP_PLEX HAIR SYSTEM** brings excellent results. Comparison of fracture resistance and the condition of hair after decolorization without and with DEEP_PLEX:



WITHOUT DEEP_PLEX



WITH DEEP_PLEX

DEEPBOND TECHNOLOGY: DEEP RESTORATION AND PROTECTION OF THE STRENGTH AND POWER OF THE BONDS IN THE HAIR FIBERS

RESULTS

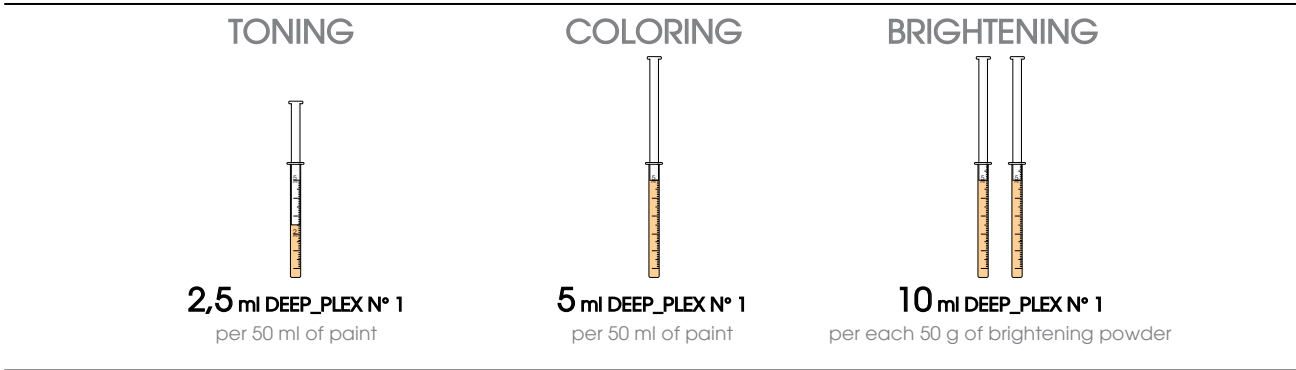
- ✓ Tested and proven excellent results of protection against harmful effects of chemical and physical factors.
- ✓ Significant improvement in hair condition and the strengthening of inner bonds.
- ✓ Noticeable reduction of hair frangibility.
- ✓ Noticeable effect straight after the first treatment.
- ✓ Simple and easy to use.
- ✓ Compatible with all types of products for professional hairdressing treatments.
- ✓ Allows preserving of the same application methods and exposure time during each hairdressing procedure.
- ✓ Without influencing the effects of applied treatments.
- ✓ For any type of hair damage caused by hairdressing treatments and negative external influences.

APPLICATION INSTRUCTIONS

TONING, COLORING, AND BRIGHTENING PROCESS

STEP 1 TREATMENT IN THE SALON

- 1. Combine the paint or brightener with the oxidant according to the instructions of the paint / brightener’s manufacturer, mix the ingredients thoroughly.
- 2. Add the necessary amount of DEEP_PLEX N° 1 BOND STIMULATOR to be used in the process to the obtained mixture. Follow the proportions shown in the diagram below. Mix all the ingredients thoroughly.



- 3. Apply the mixture to the hair. Leave on the hair according to the time recommended by the paint / brightener’s manufacturer. DEEP_PLEX HAIR SYSTEM, without significantly impacting the effectiveness and results of chemical processes, allows you to maintain the same application methods and exposure time during each hairdressing procedure.
- 4. Then rinse the mixture thoroughly from the hair, wash the hair with DEEP_PLEX N° 4 STABILIZING SHAMPOO and dry with a towel.

STEP 2 TREATMENT IN THE SALON

- 1. Spread the DEEP_PLEX N° 2 BOND ENHANCER evenly over the entire length of the hair. The amount of the product depends on the type and length of the hair.
- 2. Leave the product on the hair for 5-10 minutes.
- 3. Rinse the hair thoroughly and apply styling.

STEP 3 TREATMENT AT HOME

- 1. Apply a small amount of DEEP_PLEX N° 4 STABILIZING SHAMPOO and massage it into your damp hair, rinse with warm water. Repeat if necessary. Then dry the hair with a towel.
- 2. Apply DEEP_PLEX N ° 3 BOND STABILIZER evenly over the entire length of your hair, leave for 5-10 minutes. Rinse thoroughly and style at your own discretion.
- 3. Apply twice a week.

OTHER TREATMENTS WITH THE USE OF DEEP_PLEX HAIR SYSTEM

CHEMICAL STRAIGHTENING OF HAIR

- 1. Add 2 ml of DEEP_PLEX N° 1 to each of 10 g of the straightening cream used.
- 2. Put the mixture on the hair. Follow the instructions of the manufacturer of the product for straightening hair.
- 3. Apply the appropriate amount of neutralizer, leave on the hair according to the time specified by the manufacturer, then thoroughly rinse the product with water and dry the hair with a towel.
- 4. Spread the DEEP_PLEX N° 2 BOND ENHANCER evenly over the entire length of your hair. The amount of product depends on the type and length of your hair.
- 5. Leave the product on the hair for 5-10 minutes, then rinse thoroughly and apply styling.
- 6. It is recommended to continue the treatment with the DEEP_PLEX N° 3 and DEEP_PLEX N° 4 products in daily care to strengthen and prolong the treatment effects.

PERM

- 1. Carry out the perming procedure in accordance with the manufacturer’s instructions.
- 2. Next, mix DEEP_PLEX N° 1 with water in a 1 : 4 ratio (e.g. 5 ml of DEEP_PLEX N° 1 and 20 ml of water). After rinsing the fixative from the hair, apply the mixture onto the hair. Leave on the hair for about 10 minutes, do not rinse.
- 3. Then spread the DEEP_PLEX N° 2 BOND ENHANCER evenly over the entire length of your hair. The amount of the product depends on the type and length of your hair.
- 4. Leave the product on the hair for 5-10 minutes, then thoroughly rinse the hair and dry.
- 5. It is recommended to continue the treatment with the use of DEEP_PLEX N° 3 and DEEP_PLEX N° 4 products in daily care to strengthen and prolong the treatment effects.

DEEP PLEX: UNLIMITED POSSIBILITIES OF USE

HAIR RESTORATION TREATMENT

The hair restoration treatment has been developed to regenerate and strengthen hair damaged and destroyed in hairdressing procedures carried out previously. It is designed to restore hair vitality and provide extreme protection, strengthening, intense glow and consistency before proceeding to a professional hairdressing service.

1. Wash your hair with a cleansing shampoo, dry the hair with a towel.
2. Mix DEEP_PLEX N° 1 BOND STIMULATOR and DEEP_PLEX N° 2 BOND ENHANCER in a 1 : 4 ratio. The amount of mixture required depends on the type and length of the hair. Distribute it evenly over the entire length of the hair from the roots to the ends themselves.

APPLICATION OF THE HAIR RESTORATION TREATMENT:

SHORT HAIR

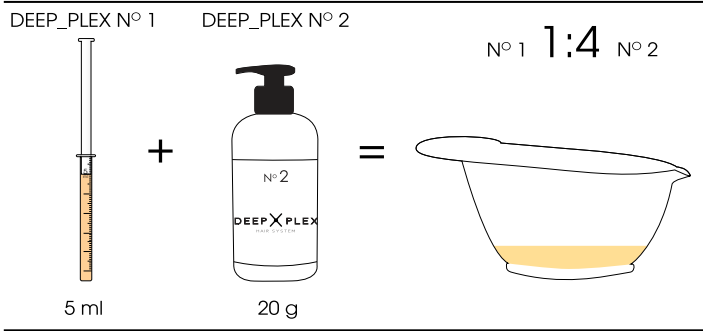
5 ml DEEP_PLEX N° 1 + 20 g DEEP_PLEX N° 2

MEDIUM HAIR

10 ml DEEP_PLEX N° 1 + 40 g DEEP_PLEX N° 2

LONG HAIR

15 ml DEEP_PLEX N° 1 + 60 g DEEP_PLEX N° 2



3. Leave under the heat source for 15-20 minutes, then rinse thoroughly.
4. Spread DEEP_PLEX N ° 2 evenly over the entire length of your hair. The amount of product depends on the type and length of your hair. Leave the product on the hair for 3-5 minutes, then rinse thoroughly and apply styling.
5. It is recommended to continue the treatment with the use of DEEP_PLEX N° 3 and DEEP_PLEX N° 4 products in daily care to strengthen and prolong the treatment effects.

FAQ

- **How does the DEEP_PLEX HAIR SYSTEM work?**

DEEP_PLEX is a system of rebuilding disulfide bridges in a few simple steps. It reduces the risk of hair breakage, protecting hair fibers from damage that may result from chemical treatments.

- **Is DEEP_PLEX compatible with every chemical treatment?**

Yes, DEEP_PLEX has been developed to protect hair from possible damage and destruction caused by lightening, coloring, perming or chemical hair straightening.

- **Does the system only affect disulfide bridges?**

No, thanks to the innovative DEEPBOND technology, the DEEP_PLEX protection process affects any hair structure, enhancing, nourishing, and protecting it.

- **How is DEEP_PLEX N° 2 different from a professional conditioner / mask?**

DEEP_PLEX N° 2 BOND ENHANCER is based on active ingredients that preserve the effects of restoration and strengthening of the hair fibers thanks to the application of DEEP_PLEX N° 1, restoring strength, brilliance, elasticity, and vitality of the hair and deeply nourishing it. This mechanism characterizes the DEEPBOND technology, no other professional conditioner / mask has such properties.

- **Can a different conditioner or mask be used instead of DEEP_PLEX N° 3 BOND STABILIZER?**

We allow this possibility, however, be aware that the stabilization of hair fibers and their uniformity will be disturbed. The unique composition of DEEP_PLEX N° 3 enables it to reach the deepest layers of the hair, closing its scales. Most nutrients and masks, on the other hand, affect only the shallower layers, thus losing their properties after washing the hair.

- **Can one undergo a hair restoration treatment with DEEP_PLEX without any chemical treatment on the hair?**

Yes, the hair restoration treatment allows you to strengthen the bonds damaged and destroyed by earlier chemical treatments. The instructions provide tips on how to perform the treatment.

- **What will happen if we add more DEEP_PLEX N° 1 during a chemical treatment?**

If we add more DEEP_PLEX N° 1 than is recommended in the method of use, the effects of protection and reconstruction will simply be intensified. However, excessive dilution of the blend may alter the effects of the treatment, for example, lightening or twisting of the hair may be reduced. A higher DEEP_PLEX N° 1 dose will not adversely affect the health of the hair.

- **Do you need to increase the oxidant cream concentration when using DEEP_PLEX N° 1?**

The DEEP_PLEX system does not change the degree of brightening of the hair significantly, so there is no need to increase the concentration of the oxidizing cream.

- **How long should DEEP_PLEX N° 3 BOND STABILIZER be used?**

The time of use of DEEP_PLEX N° 3 is dependent on the condition of the hair. This preparation can be used for a long time to support and protect hair that is exposed to chemical treatments and negative externalities.

- **Can DEEP_PLEX N° 3 and DEEP_PLEX N° 4 be used on extended hair?**

DEEP_PLEX N° 3 and DEEP_PLEX N° 4 can be used without any obstacles only when the extension of the hair is natural. Always follow the instructions given in the package leaflet.

- **What to do when, as a result of lightening, the hair has not reached the planned brightening level?**

As you know, hair has an individual content of natural dyes, so it happens that it does not undergo brightening the first time. Visual inspection is recommended during lightening / decolorization. If the maximum time for the treatment has been reached and the effect is not achieved, the hair should be treated again without washing. Prepare a new mixture of lightening powder, oxidation emulsion, and DEEP_PLEX N° 1 in the proportion given in the instructions and apply the mixture again. Visual inspection is recommended to control the degree of lightening. Once you have reached the desired level of lightening, rinse your hair well with water, wash it thoroughly with DEEP_PLEX N° 4 STABILIZING SHAMPOO and apply DEEP_PLEX N° 2 according to the method of usage.

- **Can another shampoo be used instead of DEEP_PLEX N° 4?**

The stabilizing shampoo has been based on mild washing substances that were chosen to thoroughly clean the hair and head skin while not compromising the results of the treatment. After the use of DEEP_PLEX HAIR SYSTEM, it is advised to use shampoos that are recommended for damaged, dry, weakened, and sensitized hair. However, the best solution is to use **DEEP_PLEX N° 4 STABILIZING SHAMPOO** regularly.



**DEEP PLEX: A CREATIVE SYSTEM OF IN-DEPTH RECONSTRUCTION AND BOND
STRENGTH PROTECTION**

DEEP X PLEX

HAIR SYSTEM

Stapiz PROFESSIONAL
HAIR
COSMETICS

STAPIZ PROFESSIONAL HAIR COSMETICS

Długa Kościelna ul. Szczęśliwa 34 05-074 Halinów +48 22 783 27 16 biuro@stapiz.pl www.stapiz.com